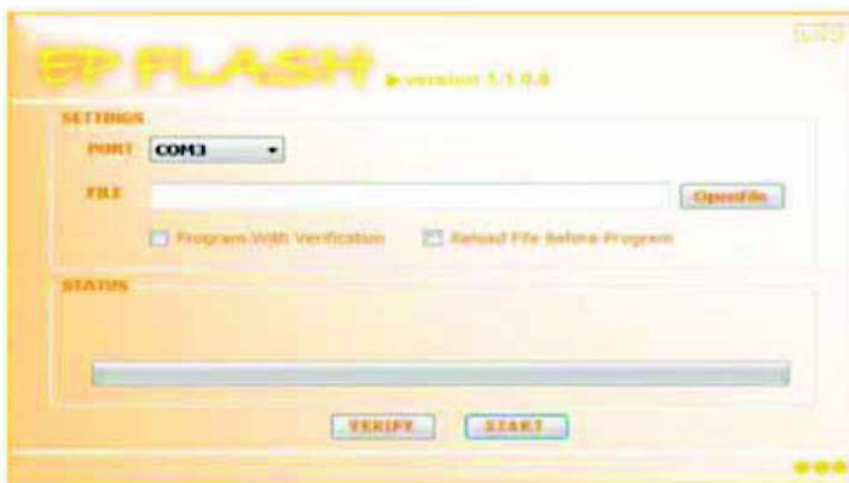


This firmware update is intended for use with the UltraAV 4x8 HDMI 1.2 Switch model number K072C-004B.

The program "EP Flash" is available for download at <http://ap.koryo.com.tw>
Download version 1.1.0.8

How to install/update system software

1. Install EP FLASH
2. Open EP FLASH Application Program



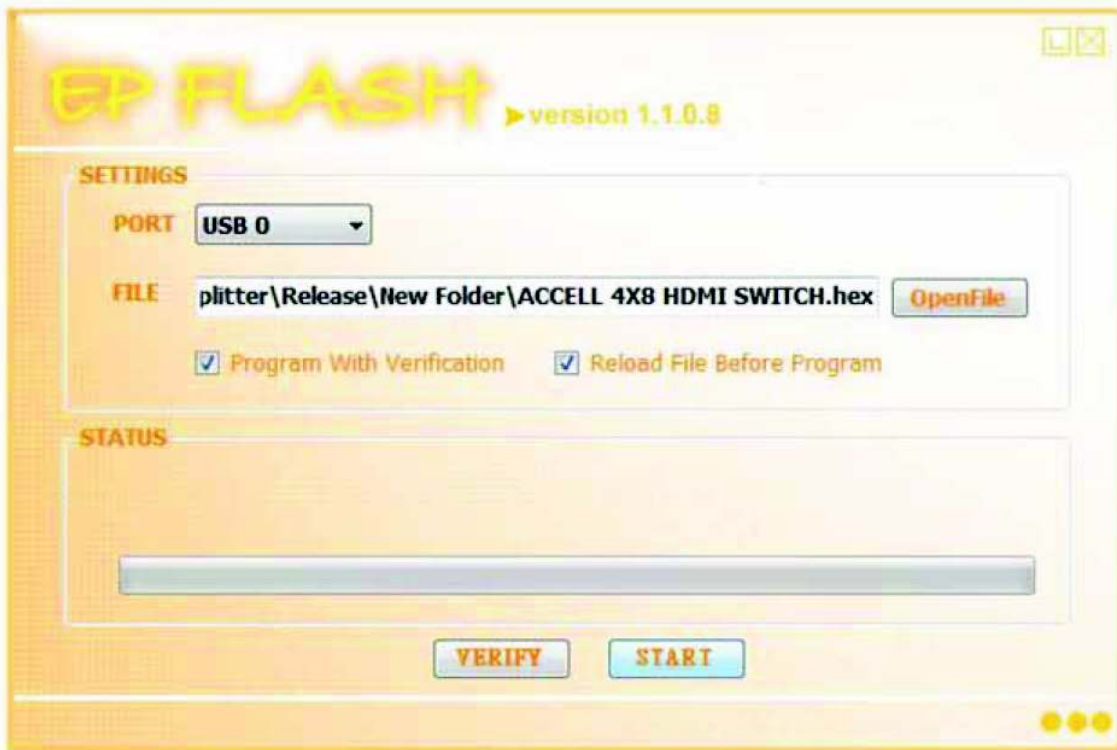
3. Turn OFF the system Main Power Switch
4. Plug-out any HDMI cables from system input port
5. Plug-in the USB to mini USB cable (One side is PC, another side is system)
6. Turn ON the system Main Power Switch
7. EP FLASH will auto detect the upgrade system and change PORT to "USB 0"



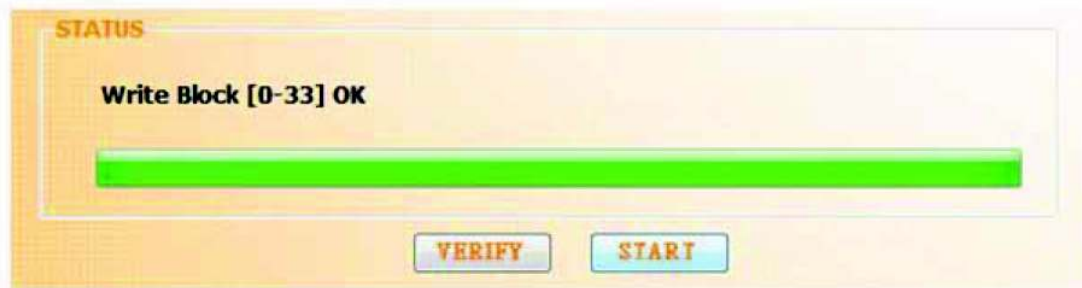
Name	Date modif...	Type	Size
<input type="checkbox"/> ACCELL 4X8 HDMI SWITCH.hex			

8. Click "OpenFile" bottom from EP FLASH, then select the upgrade file.

9. Check "Program with Verification" and "Reload File Before Program", then Click the "**START**" button



10. After process bar ready, Plug out the USB cable and turn OFF& ON the system Main Power Switch again.



Firmware upgrade is complete.